



Enviroclad Membrane

Waterproofing integrity from your roofing membrane solution

Case Study

Apartments, Remuera Road

Challenge

A residential apartment block in Remuera was facing ongoing issues with the waterproofing solution that had been applied to the roof's surface. The roofing membrane was a painted solution that had been leaking for a number of years, resulting in water damage and unhappy residents.

Solution

The key focus was to ensure that the new membrane was watertight and attractive, as one group of apartments looks directly onto the roof of its neighbour.

Skellerup Enviroclad was the ultimate solution. The old surface was removed to ensure the integrity of Enviroclad was not compromised in anyway. The concrete roof top was then ground to provide a smooth surface on which to lay Enviroclad.

Grey Enviroclad was installed using heat welded (vulcanised) seams. The width and length of the Enviroclad membrane meant less seams were required, improving the watertight integrity of the solution. The proprietary range of accessories meant that internal and external corners were sealed efficiently with a watertight finish.

The installation was completed by a trained and licensed Skellerup Approved Applicator, ensuring that a professional and watertight finish was achieved with Enviroclad.

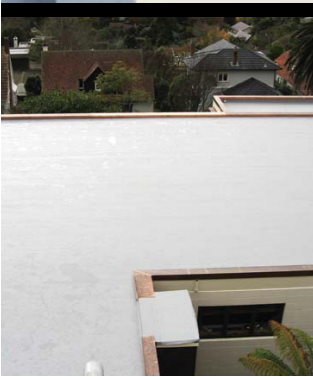
For total peace of mind the Enviroclad solution was covered by the Viking Full System Warranty. The Full System Warranty covers both the materials and the installation in one document.

Results

The Enviroclad roofing membrane is watertight and the building owner and residents are extremely happy with the outcome.

The Enviroclad finish is aesthetically pleasing and the Full System Warranty provided the Body Corp with confidence as the solution was supported and backed with quality assurance.

"The Skellerup Enviroclad roofing membrane has resulted in a watertight, smooth roofing finish which we are delighted with. The product and installation has lived up to our expectations and we no longer have to contend with a leaking roof" said the Building Construction Company owner, John Moros of Jaros Construction, "For total peace of mind and quality assurance the product and installation is covered by the Viking Full System Warranty. This was a critical factor for the Body Corp in selecting the Enviroclad solution. I would recommend Enviroclad as a watertight roofing solution."





SKELLERUP
Enviroclad

Skellerup Enviroclad is the pinnacle in roofing membrane waterproofing solutions. It possesses all the necessary attributes of a truly world-class membrane from both waterproofing and environmental perspectives.

Enviroclad has been a proven performer worldwide for the last 18 years and is manufactured by one of the world's largest and most technologically advanced manufacturers of waterproofing membranes, Carlisle-Syntec Inc.

Enviroclad, a thermoplastic single ply membrane, is part of the world's fastest growing roofing membrane category.



Energy Saving

Enviroclad is highly reflective, hence will directly contribute to a reduction in a building's energy use and cooling costs.

Enviroclad is US ENERGY STAR® rated and Cool Roof Rating Council certified. In New Zealand the reduction in energy consumption will positively contribute to a building's Green Star rating.

Peace of mind

Enviroclad is BRANZ appraised. BRANZ performs an independent assessment of the product which reviews and tests the quality of the product, its ability to meet the New Zealand Building Code requirements and the expectations of the user.

A BRANZ appraised product, such as Enviroclad, provides you with peace of mind and quality assurance that you are choosing the right roofing membrane solution.

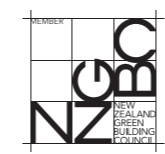


Innovative & Environmentally Friendly

Enviroclad offers innovative features such as heat weldable technology; high puncture resistance and 100% recycling of off-cuts during its manufacturing process.

Its heat welded (vulcanised) seams create stronger and flatter laps. This technology also renders quicker installation time, while assuring watertight integrity, even when fully immersed.

Enviroclad can be applied over the existing surface saving uplift and dumping of the old roof surface and the membrane's polyester mesh scrim ensures high puncture resistance.



Wider & Longer

Enviroclad sheets are 3.0m wide by 30.4m long (91.2m²) compared to traditional membranes ranging between 10m² - 25m². The greater width and length of Enviroclad sheets mean fewer seams and therefore a watertight, cost effective solution.

Accessories

Enviroclad is supplied as a full system with heat weldable accessories to deal meticulously but effortlessly with the challenge of roof penetrations such as air conditioning units and substrate vents.

Enviroclad walkways are also available which assist with further protection of the roof surface when air conditioning units or the roof is being serviced.

Colour options

Enviroclad is available in grey, white and tan (indent only). Internationally, the white membrane is the preferred solution due to the high reflectivity of the solution, which directly contributes to the reduction in a building's energy use and cooling costs.

Installation

Enviroclad can be applied to commercial and residential buildings for the waterproofing of low slope and pitched roofs, gutters and parapets, balconies and decks and roof gardens.

Enviroclad is installed exclusively by Skellerup Approved Applicators who are licensed waterproofing specialists.

masterspec

If you are a member of masterspec the Enviroclad documentation is available on their website at www.masterspec.co.nz. This will assist with documentation required for specifying Enviroclad as the roofing solution for your build, and with council compliance.

Comprehensive Quality Assurance

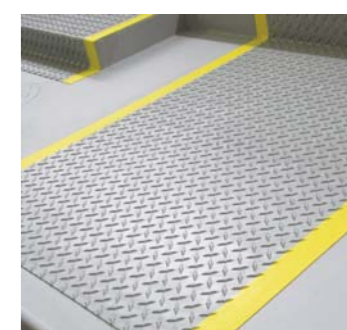
Enviroclad is backed by a 20 year warranty and is eligible for the Viking Full System Warranty.

The Full System Warranty covers both the materials and the installation direct from Skellerup Viking to the building owner under the one document.



Specifications

| | |
|-------------|--|
| Thickness | 1.14mm and 1.5mm |
| Roll width | 3.0m wide (3.6m available on indent) |
| Roll length | 30.4m long (sold cut to length) |
| Colour | Grey and White (Tan available on indent) |
| Code | STP110 (1.14mm) Grey STP100 (1.14mm) White STP510 (1.5mm) Grey STP500 (1.5mm) White |
| Material | Thermoplastic polyolefin |



Contact us

Phone or email us today to ensure the water tightness of your roof with Enviroclad.

E. info@skelleruproofing.co.nz
P. 0800 729 799

www.skelleruproofing.co.nz